

City of Stevenson Critical Aquifer Recharge Areas

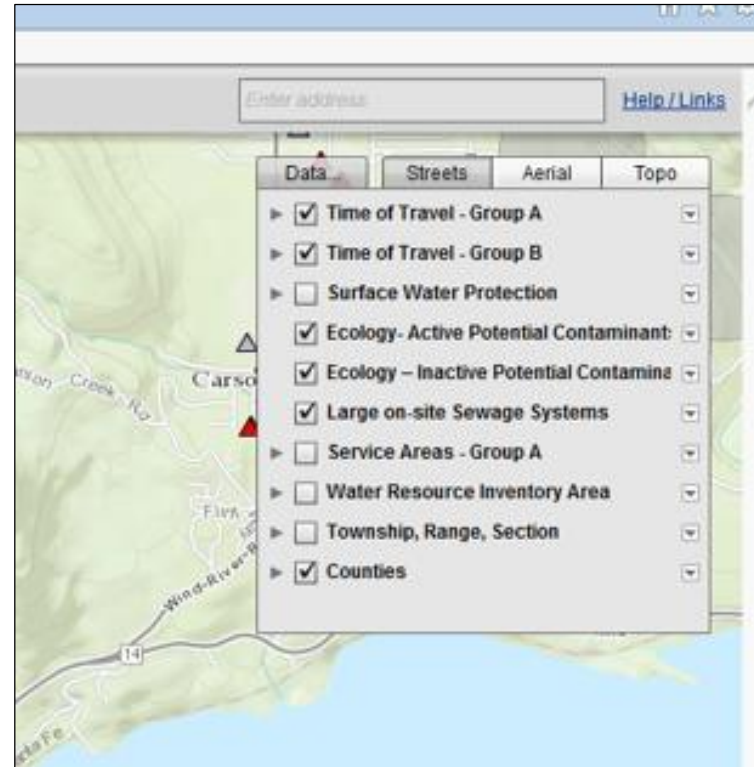
Laurie Morgan

January 2017

About Wells

Washington Dept. of Health Source Water Protection Interactive Map

- Go to Source Water Protection Map at <https://fortress.wa.gov/doh/eh/maps/SWAP/index.html>
- Zoom in to your location of interest.
- In the upper right corner, choose “data”.
- Turn on the following items (or whatever you want):
- Click on anything to see more.
- Scroll to the bottom of the pop-ups for links to information.
- Next to the “Data” button, you can change the background: “Streets”, “Aerial”, “Topo”





◀ 1 of 2 ▶ x

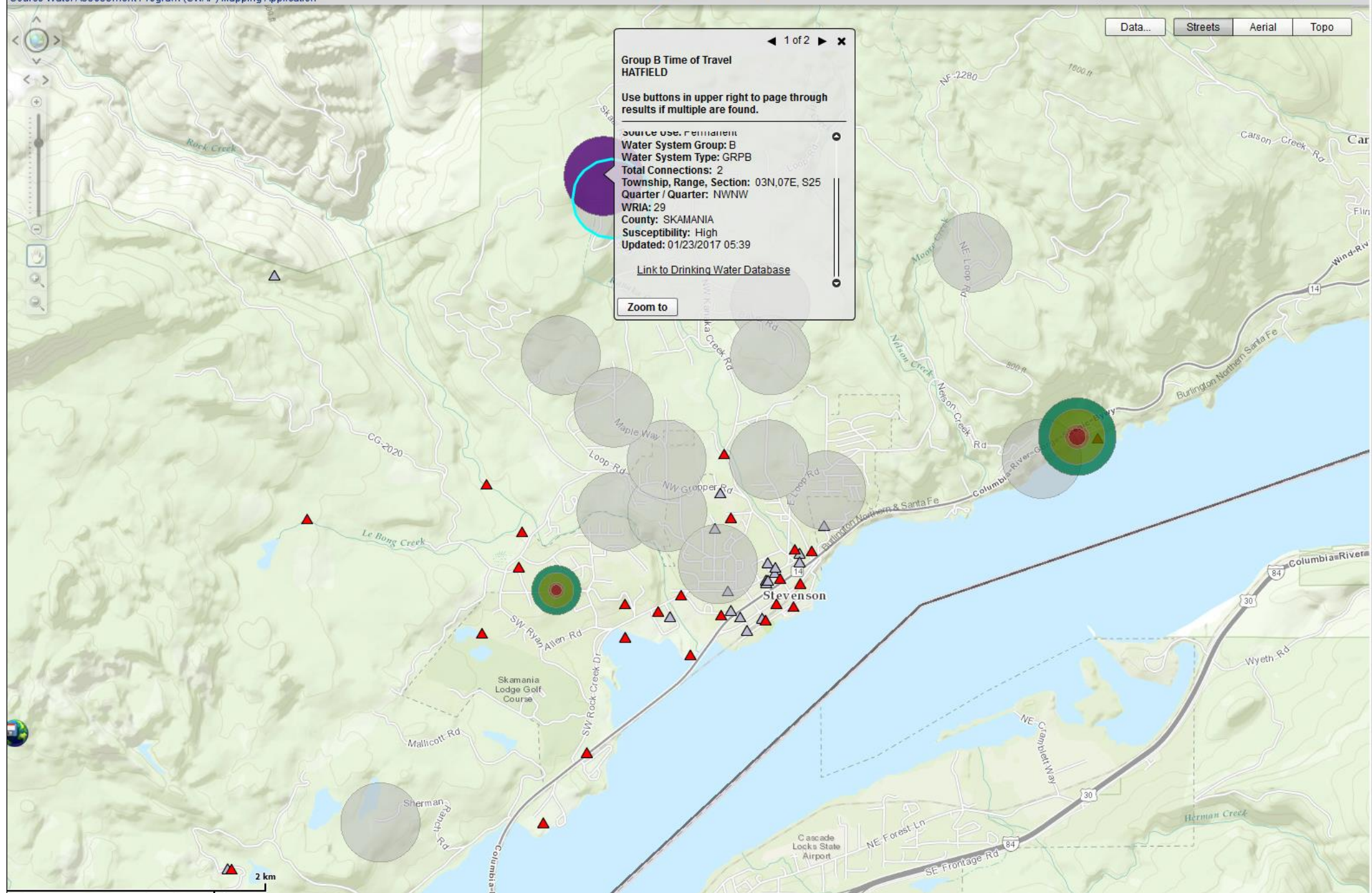
**Group B Time of Travel
HATFIELD**

Use buttons in upper right to page through results if multiple are found.

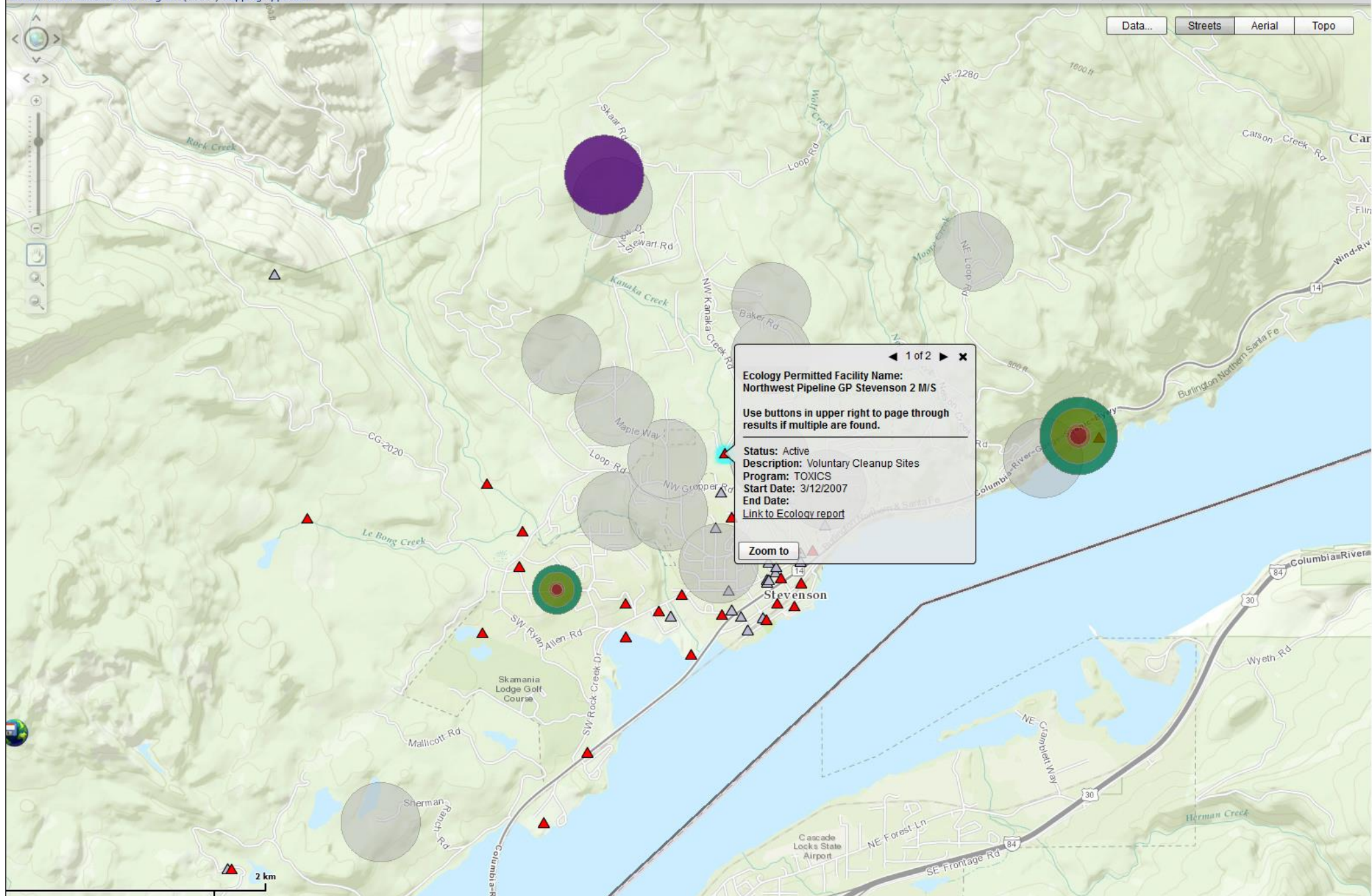
Source Use: Permanent
Water System Group: B
Water System Type: GRPB
Total Connections: 2
Township, Range, Section: 03N,07E, S25
Quarter / Quarter: NWNW
WRIA: 29
County: SKAMANIA
Susceptibility: High
Updated: 01/23/2017 05:39

[Link to Drinking Water Database](#)

Zoom to



2 km



◀ 1 of 2 ▶ ✕

Ecology Permitted Facility Name:
Northwest Pipeline GP Stevenson 2 M/S

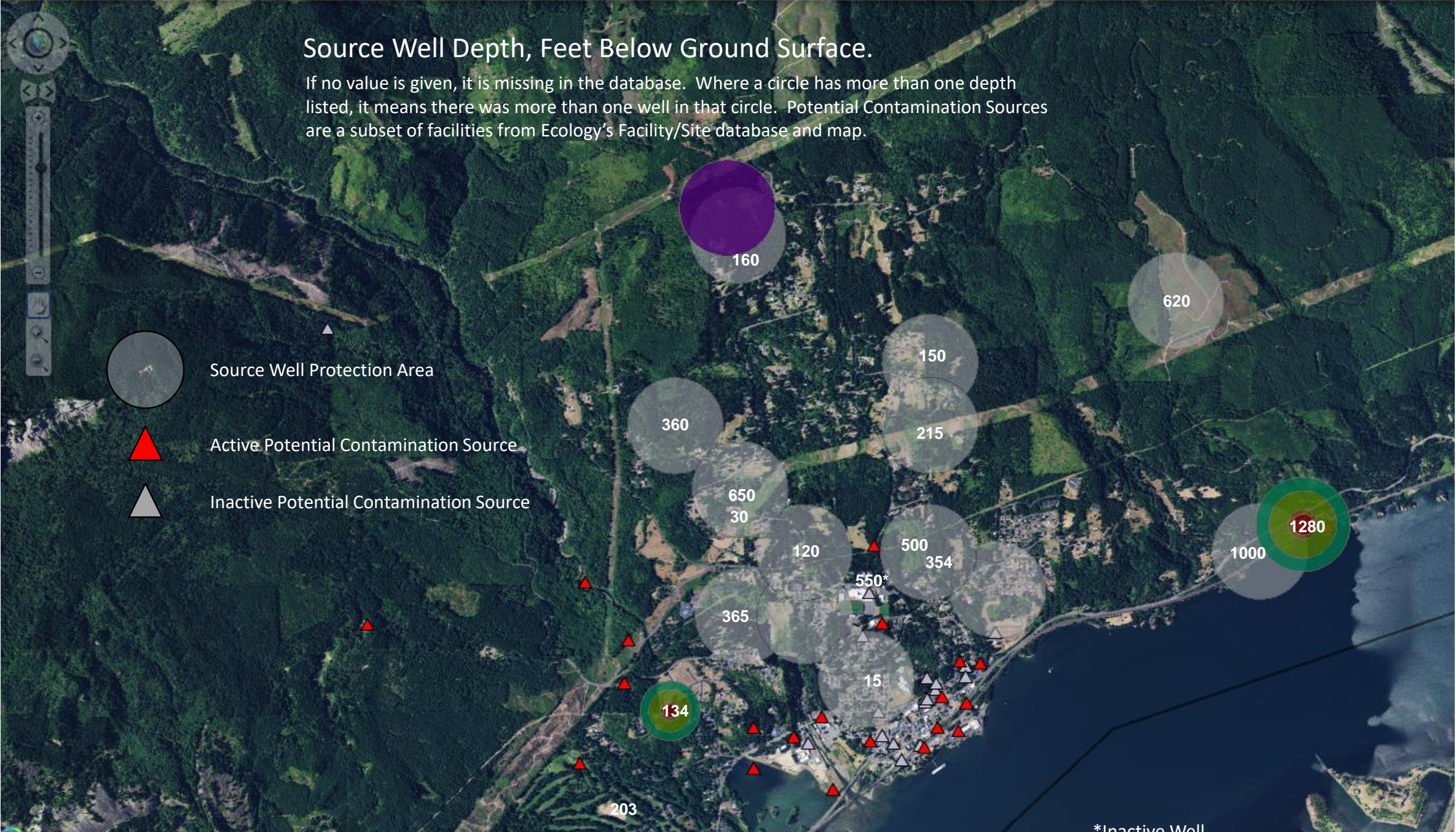
Use buttons in upper right to page through results if multiple are found.

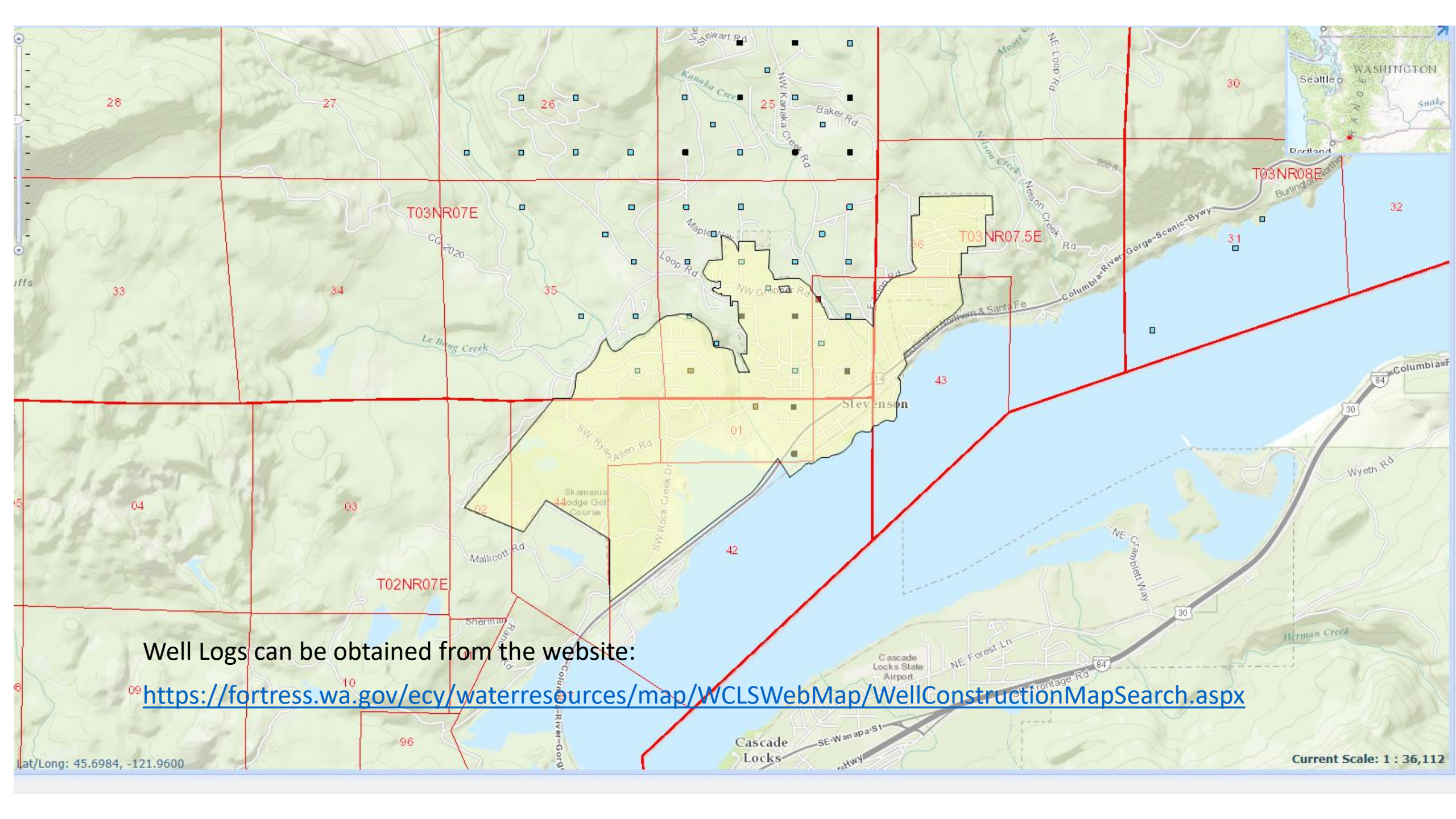
Status: Active
Description: Voluntary Cleanup Sites
Program: TOXICS
Start Date: 3/12/2007
End Date:
[Link to Ecology report](#)

Zoom to

Source Well Depth, Feet Below Ground Surface.

If no value is given, it is missing in the database. Where a circle has more than one depth listed, it means there was more than one well in that circle. Potential Contamination Sources are a subset of facilities from Ecology's Facility/Site database and map.





Well Logs can be obtained from the website:

<https://fortress.wa.gov/ecy/waterresources/map/WCLSWebMap/WellConstructionMapSearch.aspx>

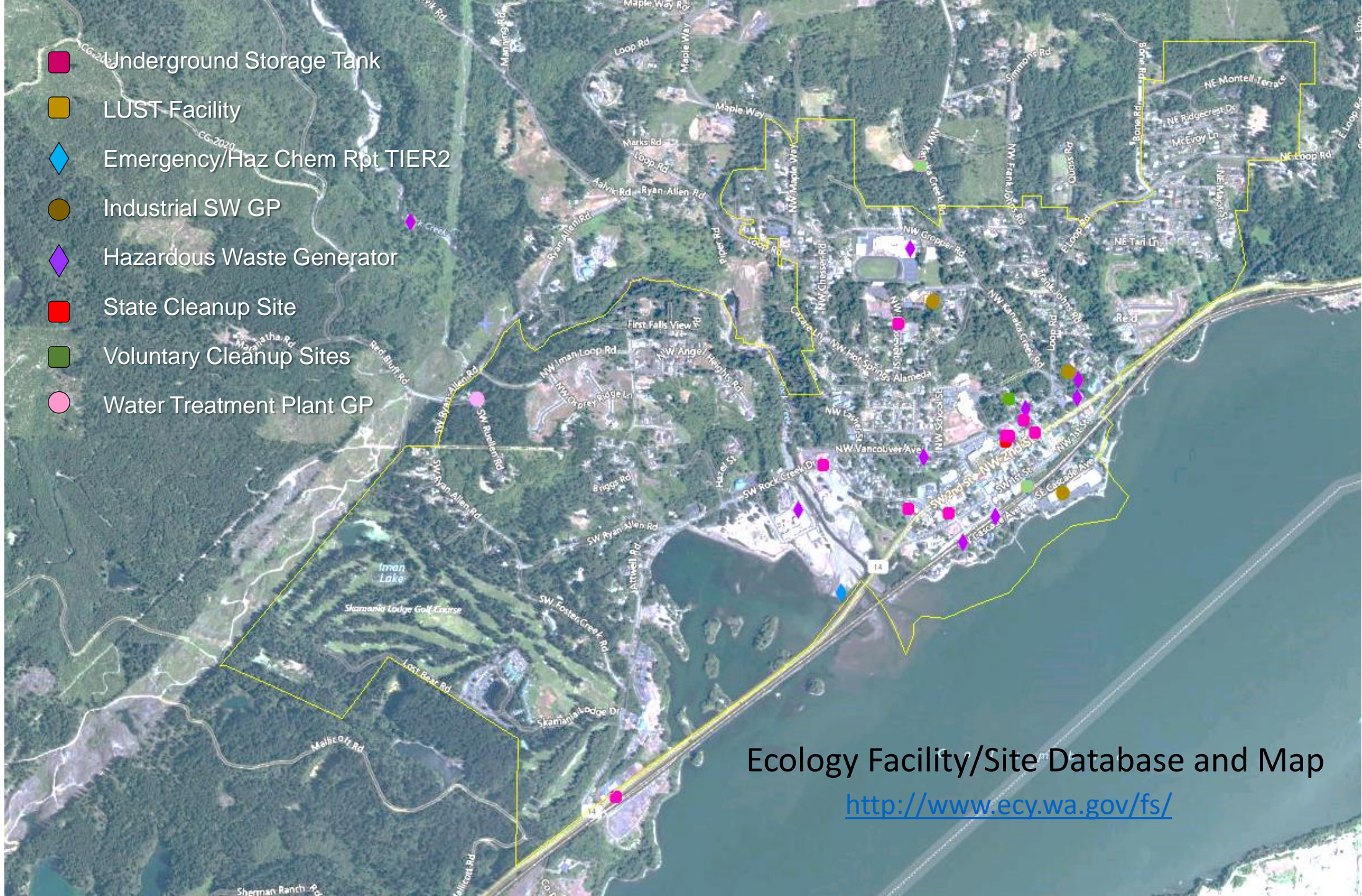
Lat/Long: 45.6984, -121.9600

Current Scale: 1 : 36,112

About Potential Contaminant Sources

(See also [Suspected or Confirmed Contaminated Sites List](#))

- Underground Storage Tank
- LUST Facility
- ◆ Emergency/Haz Chem Rpt TIER2
- Industrial SW GP
- ◆ Hazardous Waste Generator
- State Cleanup Site
- Voluntary Cleanup Sites
- Water Treatment Plant GP



Ecology Facility/Site Database and Map

<http://www.ecy.wa.gov/fs/>

Facility/Site:
3419482

Northwest Pipeline GP Stevenson 1 M/S

Also known as: NORTHWEST PIPELINE CORP STEVENSON, NORTHWEST PIPELINE CORP STEVENSON 1 MS, Northwest Pipeline GP Stevenson 1 M/S, STEVENSON 1 METER STATION NW PIPELINE



Address

78 RYAN ALLEN RD

Decimal Coordinates

Latitude: 45.7015

STEVENSON WA 98648

Longitude: -121.9102

Geographic Information

Ecology Region: SWRO

Legislative District: 14

WRIA: 29

County: Skamania

Congressional District: 3

Tribal Land: No

Ecology Interactions

| Interaction Description | Ecology Program | Ecology Program Phone | Program ID | Start Date | End Date |
|---|-----------------|-----------------------|--------------|------------|------------|
| Haz Waste Management Activity | HAZWASTE | (360) 407-6023 | WAD988479150 | 1/1/2008 | 12/31/2008 |
| Hazardous Waste Generator | HAZWASTE | (360) 407-6023 | WAD988479150 | 5/7/2007 | 1/1/2008 |
| Voluntary Cleanup Sites | TOXICS | (360) 407-7224 | SW0844 | 3/13/2007 | |
| For a fee, Ecology staff will review an independent cleanup report(s) and provide a written decision about the adequacy of the cleanup actions taken and described in the report. | | | | | |
| Hazardous Waste Generator | HAZWASTE | (360) 407-6023 | WAD988479150 | 10/9/1990 | 2/25/1994 |

Industrial Codes (External Links Below)

| NAICS Code | NAICS Description |
|-----------------------|--------------------------------------|
| 48621 | PIPELINE TRANSPORTATION OF NATURAL G |

| SIC Code | SIC Description |
|----------------------|--------------------------|
| 4922 | NATURAL GAS TRANSMISSION |

Facility/Site: 1384 MIDSTATE LAND CO

Also known as: MIDSTATE LAND CO



Address

70 NE 2ND ST
STEVENSON WA 98648

Decimal Coordinates

Latitude: 45.69609
Longitude: -121.88235

Geographic Information

Ecology Region: SWRO

Legislative District: 14

WRIA: 29

County: Skamania

Congressional District: 3

Tribal Land: No

Ecology Interactions

| Interaction Description | Ecology Program | Ecology Program Phone | Program ID | Start Date | End Date |
|-------------------------|-----------------|-----------------------|------------|------------|-----------|
| Independent Cleanup | TOXICS | (360) 407-7224 | | 1/1/1900 | 5/12/1997 |

Industrial Codes (External Links Below)

No NAICS information is available for this facility site.

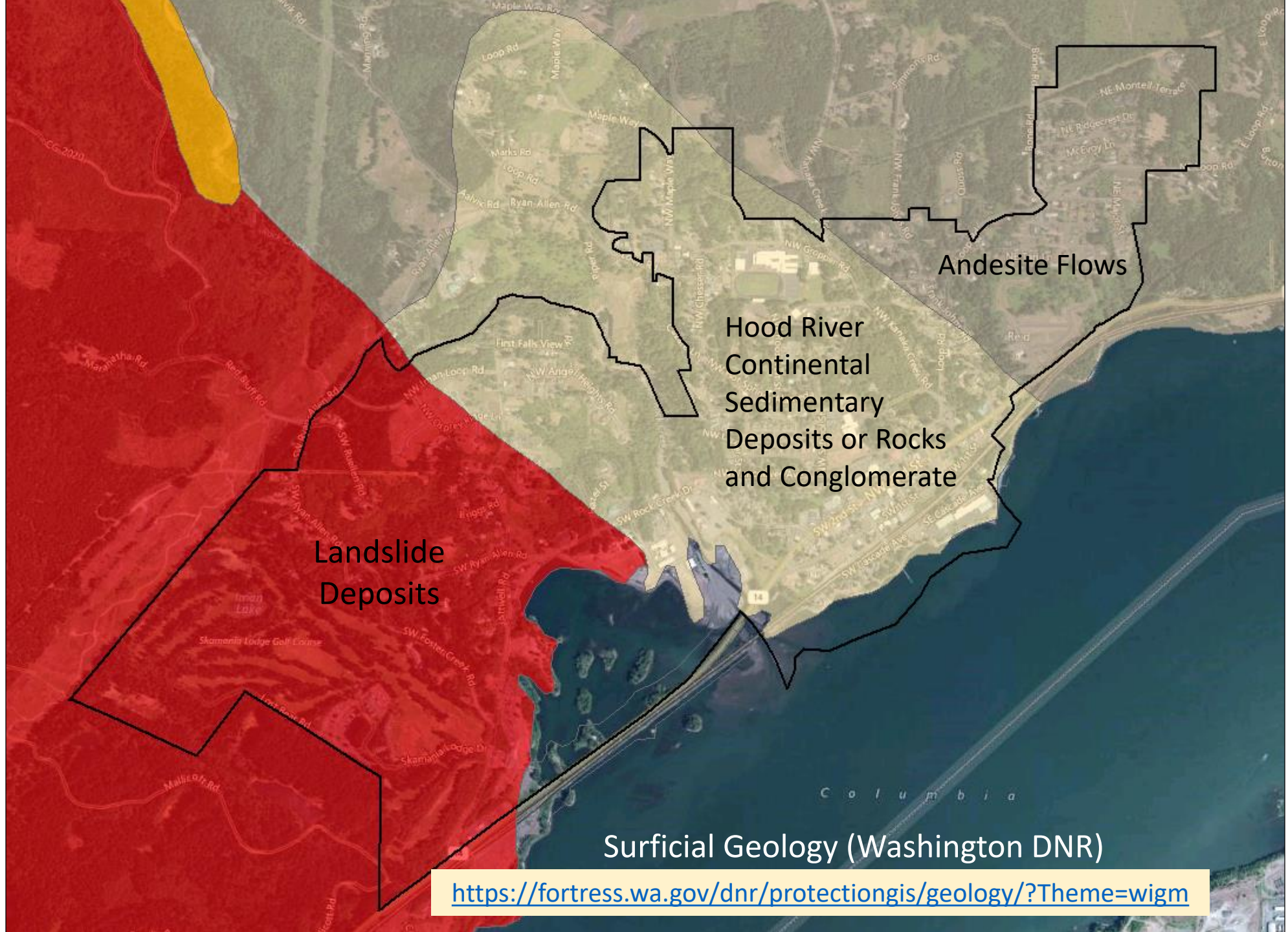
| SIC Code | SIC Description |
|-----------|--------------------------------------|
| <u>55</u> | AUTOMOTIVE DEALERS & SERVICE STATION |

Soil Drainage and Surficial Geology

- Excessively drained
- Somewhat excessively drained
- Well drained
- Moderately well drained
- Somewhat poorly drained
- Poorly drained
- Very poorly drained



Soils in Stevenson are either well-drained or somewhat excessively drained. Water (and any pollutants carried by water) travels through these soils readily.



Landslide
Deposits

Hood River
Continental
Sedimentary
Deposits or Rocks
and Conglomerate

Andesite Flows

Surficial Geology (Washington DNR)

<https://fortress.wa.gov/dnr/protectiongis/geology/?Theme=wigm>

City of Spokane Critical Materials Links



Prepared By:
Critical Materials
Technical Advisory Committee

November 16, 2009

APPENDIX A CRITICAL MATERIALS LIST

Critical Material lists have been developed over time to the point that including the list in this manual would not be practical. The current list of critical materials is a separate document and is maintained on a regular basis to include any change. Any activity which involves the use, handling or storage of any product on the list in the quantity designated is by definition a Critical Materials Use Activity and is subject to regulation.

The list of products is fairly extensive, but is not exhaustive. However, the wide variety of products found on the list and their frequent use in the chemical industry normally result in the presence of at least one critical materials at any location where regulation is needed to assure water quality protection. Should a water quality threat develop as a result of the use of a product not on the list, action should be taken to amend the list and apply the conditions of the ordinance to any activity involving that product.

The current Critical Materials List is maintained by the City of Spokane Environmental Programs staff. A hard copy or electronic copy can be obtained upon request.

APPENDIX B North American Industrial Classification Codes (NAICS) for activities likely to use chemicals

APPENDIX C

Best Management Practice (BMP) design concepts

<https://static.spokanecity.org/documents/business/resources/guidesheets/hazardousmaterials/critical-materials-handbook.pdf>

See the rest of this at the following link for more of this document.

<https://static.spokanecity.org/documents/business/resources/guidesheets/hazardousmaterials/critical-hazardous-materials-list-information.pdf>



Building Services
808 West Spokane Falls Blvd
Spokane WA 99201-3343
(509) 625-6300

ENV-01
Critical and Hazardous
Materials List
Information
Source: SMC Ch 17E.010

Will you use or store:

Liquids other than water?
Products that can mix with water?

These are considered to be critical materials!

A **Critical Material** is any product that, once released to the environment, could contaminate our drinking water supply (the Spokane Aquifer). Critical Materials can be a flammable, combustible, inert material, health hazard, or non-hazardous product.

A **Critical Materials Review** is a process used to identify and prevent potential sources of surface and ground water pollution. A Review is required for all new businesses or additions to existing businesses. The exception to the review is residential, one- and two-family dwellings, detached buildings accessory to a dwelling, and building shell construction.

Where determined to be a hazard to the drinking water, existing businesses may be required to be subject to a Critical Materials Review.

Additional Links

- [USGS internal technical memo on aquifer vulnerability studies](#)
- [King County BAS for Critical Aquifer Recharge Areas](#)
- [Critical Aquifer Recharge Area Guidance](#)
- [Assessing Ground-Water Vulnerability to Contamination: Providing Scientifically Defensible Information for Decision Makers](#)