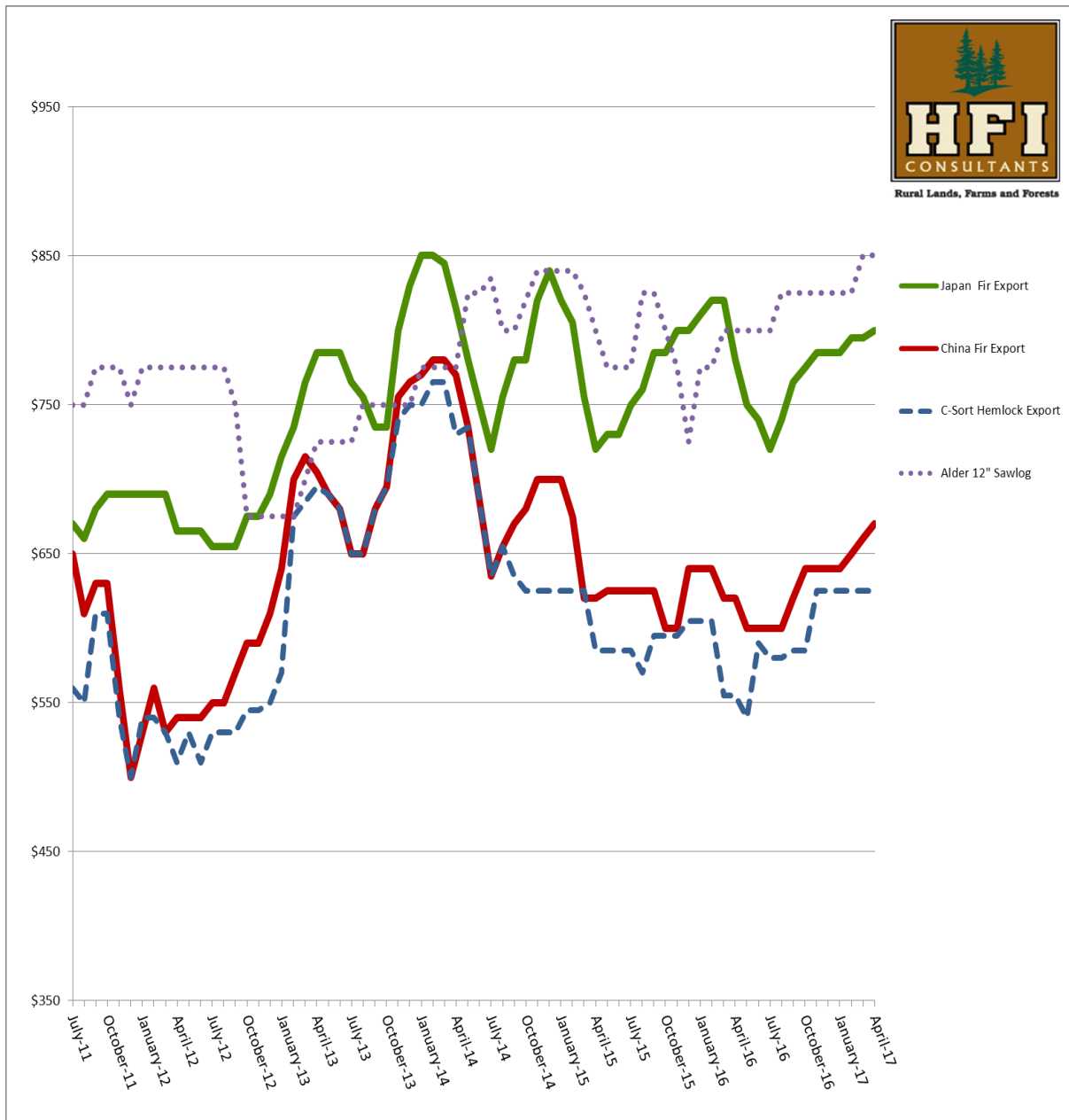


Monthly Log Price Trends



Log Prices for almost all species and sorts continue to climb into spring due to lack of supply and a good demand. Word has it that we will not see much of a seasonal downturn as typical this time of year. A 20% tariff was just imposed on Canadian imports of lumber which is on the low end of what was expected. This may help keep our domestic log prices up but probably not in a huge way.

HFI has moved to our new office in Brush Prairie. We are having an Open House May 11 and 12th. Stop by if you can.

We have also started a new company called HFI Field Services. We will be offering all our spraying services under this company. That includes site prep, roadside and pasture spraying.

*This graph is intended to show market trends. Actual prices may be different at time of harvest.